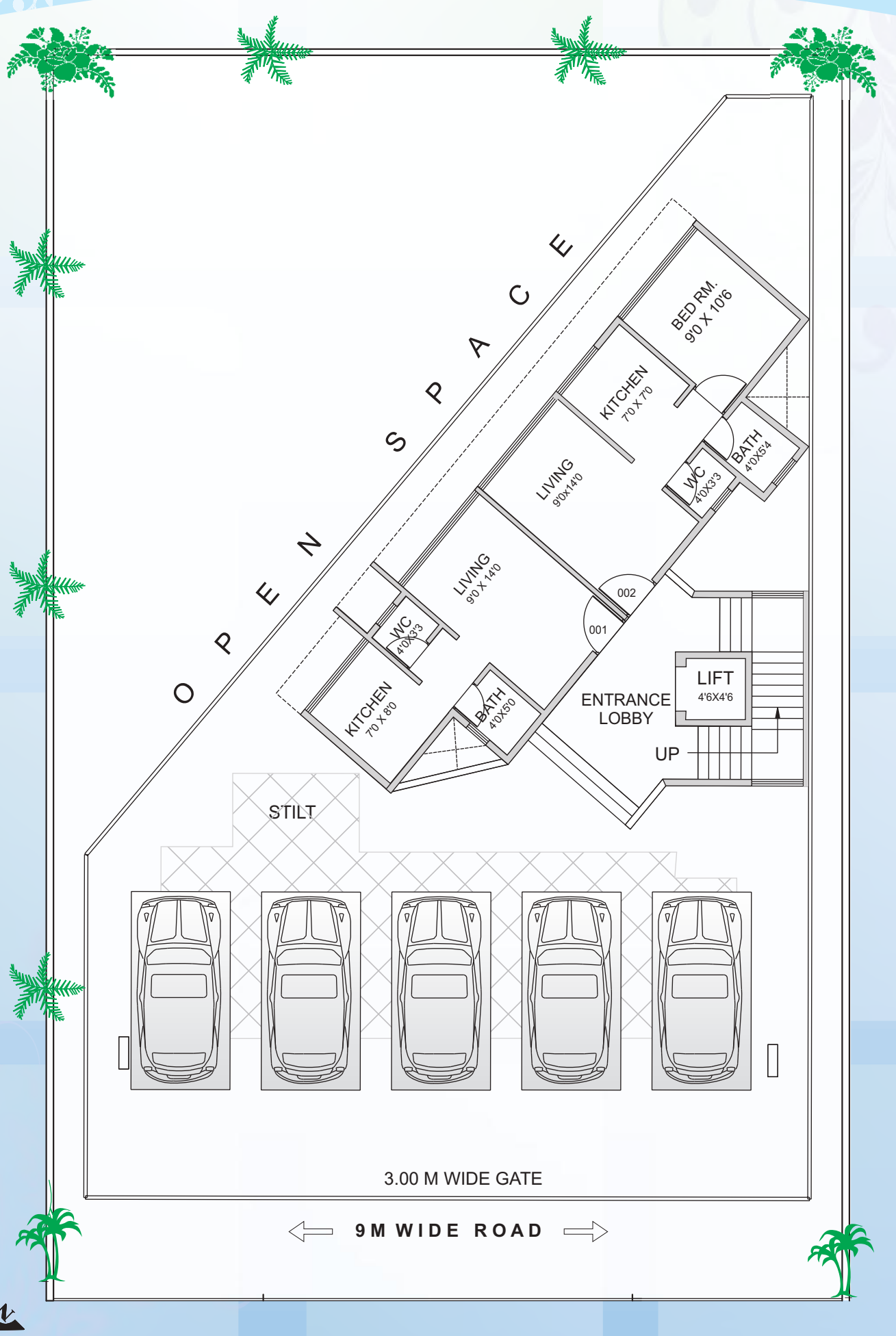


# "SAARVI ORCHID"



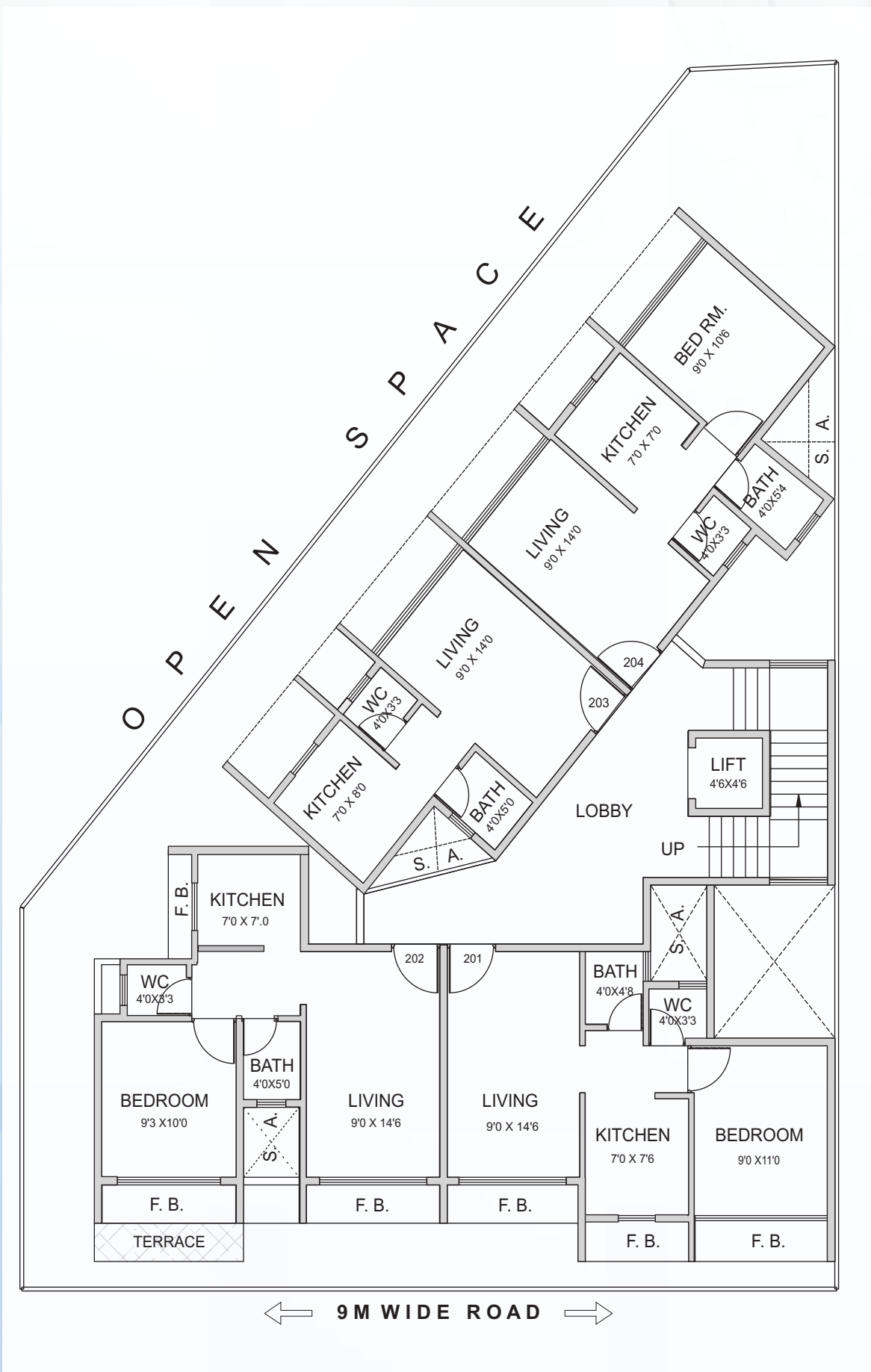
**Plot No. 136, Sector - 23, Ulwe, Navi Mumbai**

# GROUND FLOOR PLAN

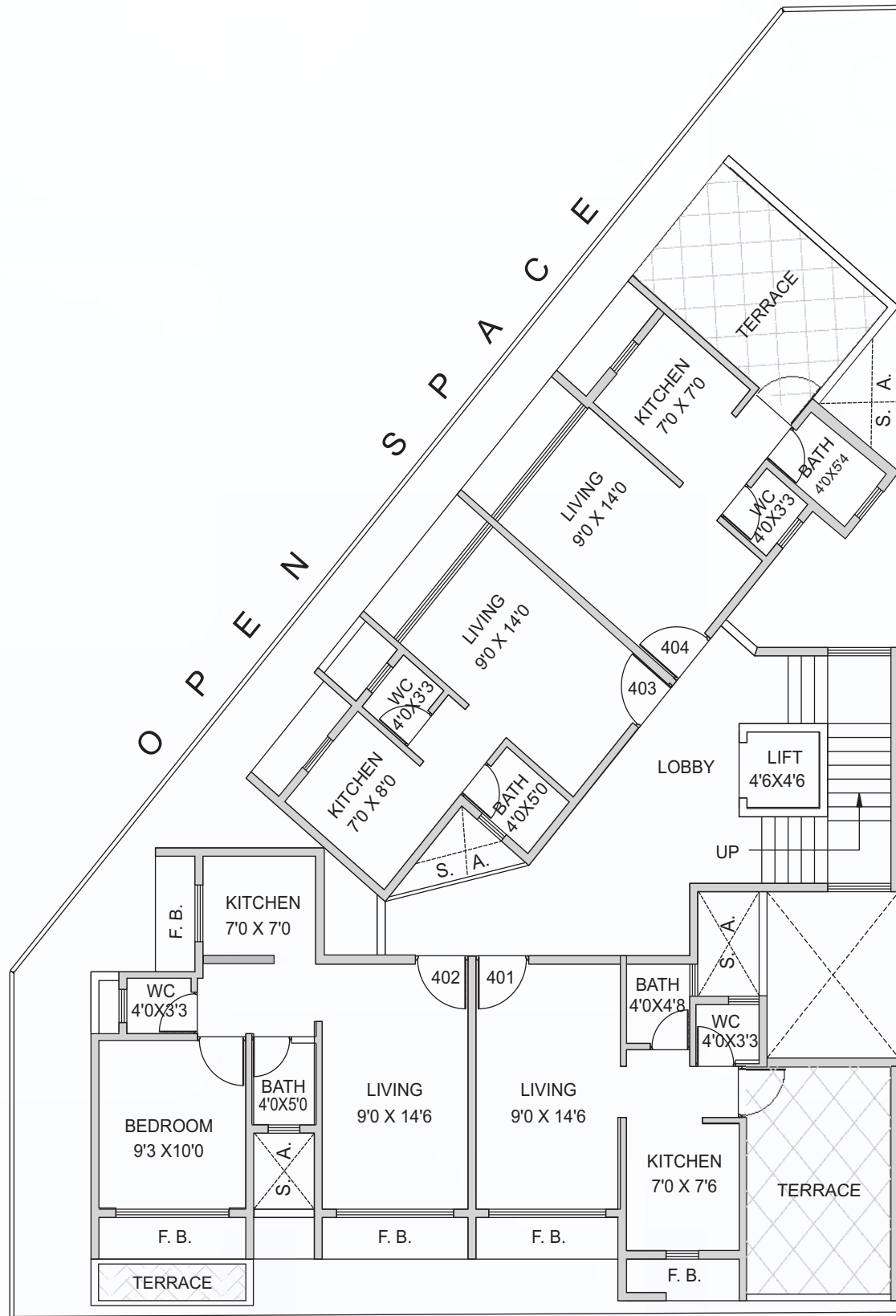




# 2<sup>nd</sup> FLOOR PLAN



# 4<sup>th</sup> FLOOR PLAN



← 9M WIDE ROAD →



# Project Brief :

## Project Features

- 1) G + 4 Storey Building with Lift
- 2) Earth Quake Resistant Structure
- 3) 100% Residential Project
- 4) Clear Title – CIDCO Transfer Plot
- 5) Excellent Planning with no wastage in all rooms
- 6) Ample car parking space
- 7) Impressive Entrance Gate with Security cabin
- 8) Advanced Security facility with intercom



## Location Features

- 1) Walk able distance from AMARA MARG & Proposed Bamandongri Railway Station
- 2) 4 km. distance from C.B.D. Belapur Railway Station.
- 3) 1 km. (Approx.) distance from Proposed Navi Mumbai International Airport.
- 4) Pollution free Environment



## Amenities

- 1) 2 X 2 Designer Vitrified flooring in all Rooms
- 2) Granite Platform in Kitchen with S.S. Sink
- 3) External Paint with Acrylic / Similar Paint
- 4) Powder coated Aluminum windows
- 5) Cable & Telephone points in Living & Master Bedrooms
- 6) Designer glazed Tiles in Bathroom & Kitchen
- 7) All internal walls with Putty & Oil bound distemper paint finish
- 8) Concealed Plumbing with reputed make C.P. Fittings
- 9) Concealed wiring with Ample Electrical Points & Modular Switches
- 10) Main door with decorative laminate
- 11) Attractive entrance & All floor lobbies.



# LOCATION PLAN

## On Going Projects



Mulund Narmada Devi CHS,  
Mulund, Mumbai

## SAARVI RESIDENCY

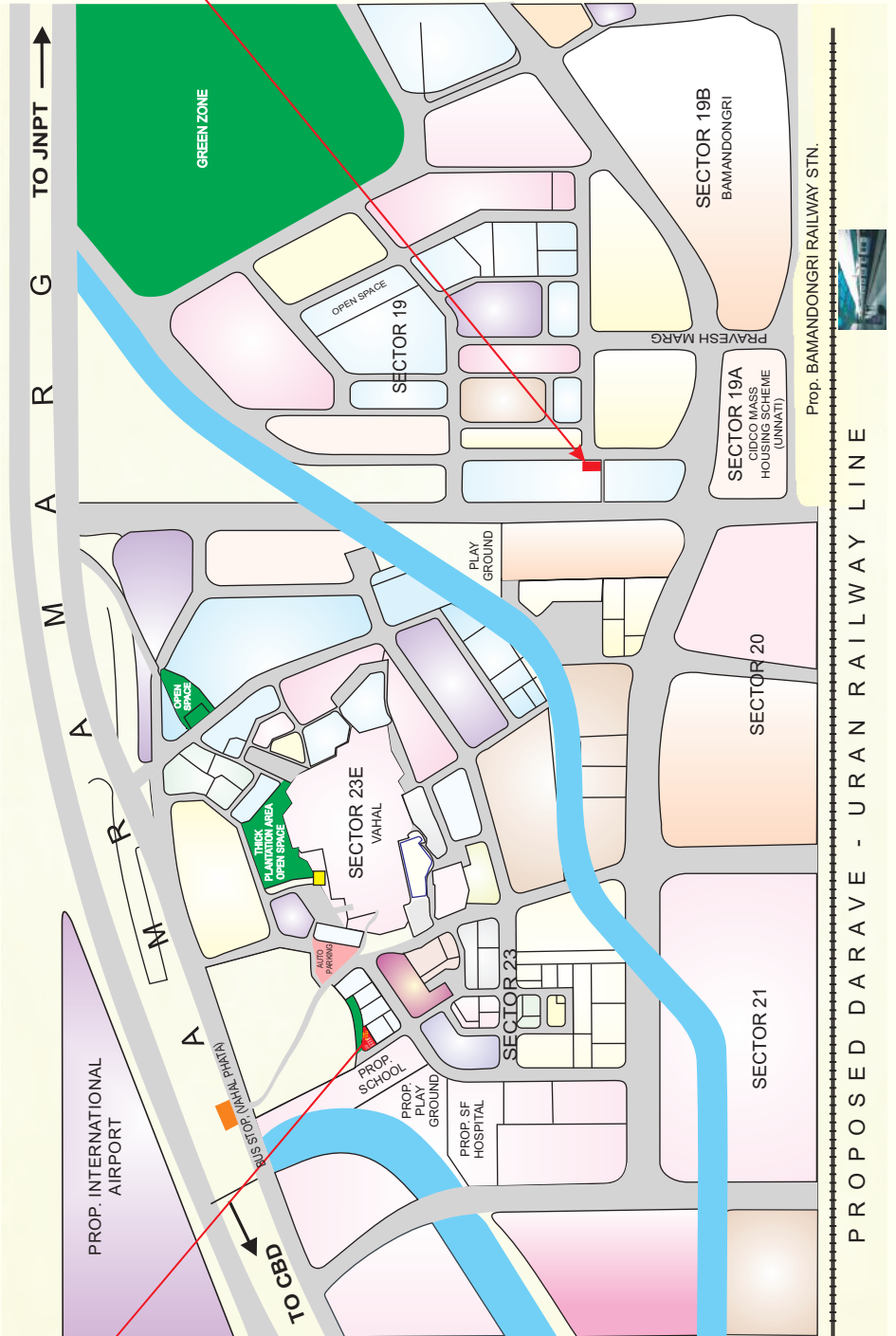


Plot No. 79, Sector 35, Mansarovar  
(Kamothe) Navi Mumbai.

### "SAARVI TULIP"

SECTOR 19, PLOT No. 16

ULWE



### "SAARVI ORCHID"

SECTOR - 23, PLOT NO. 136

ULWE

Developers

## Saarvi Home Makers

Shop No. 10, Ambe Prema CHS., Sector - 3, Plot No. 8, Opp. Railway Station,  
Ghansoli, Navi Mumbai - 400 701. Telefax : 2755 2230, www.saarvigroup.com  
E-mail : saarvigroup@gmail.com For Booking call : 9594065050, 9320344488

Architect

## Satish Ahuja

Vashi, Navi Mumbai.

